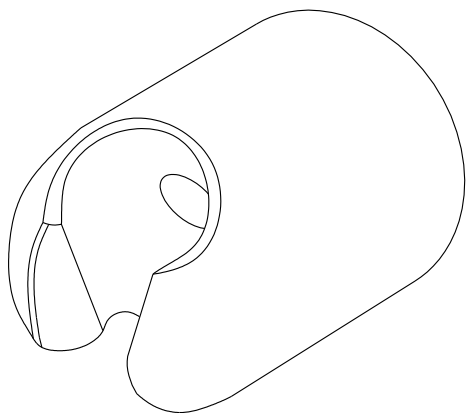


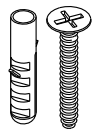
# Elements Of Design

## Wall Bracket For Hand Shower Installation



### Parts:

Mounting  
Screw  
& Anchor



2 Pcs

[www.eodfaucet.com](http://www.eodfaucet.com)

TOLL-FREE CUSTOMER SERVICE: 877-FAUCET-1(328-2381)

TECHNICAL SUPPORT E-mail: [info@eodfaucet.com](mailto:info@eodfaucet.com)

12775 Reservoir St., Chino, CA 91710

### TOOLS REQUIRED



Flathead Screwdriver



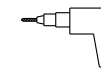
Phillips Screwdriver



Marking Pencil



Hammer



Power Drill

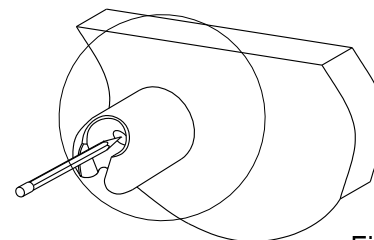


Fig. 1

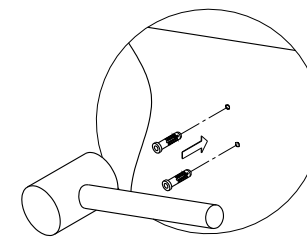


Fig. 2

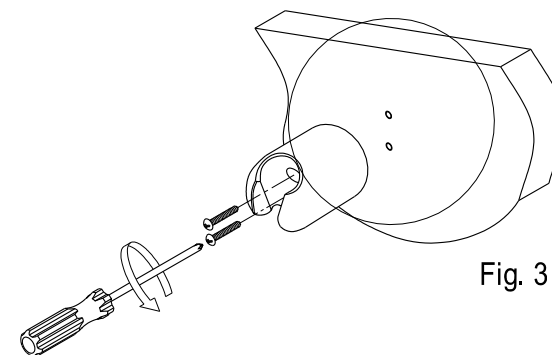


Fig. 3

### Installation Steps:

Step 1. Locate position on the wall and mark outline of cover plate on the wall (fig. 1).

Step 2. Locate wall bracket in the center of outline. Mark location of the mounting screw (fig.1) and drill holes at the marked location.

Step 3. Insert anchors into the holes until flush with wall (fig. 2).

Step 4. Screw the wall bracket to wall with mounting screw (fig. 3).

### Cleaning

Clean with a damp cloth only.

Avoid using metal or abrasive polishes.