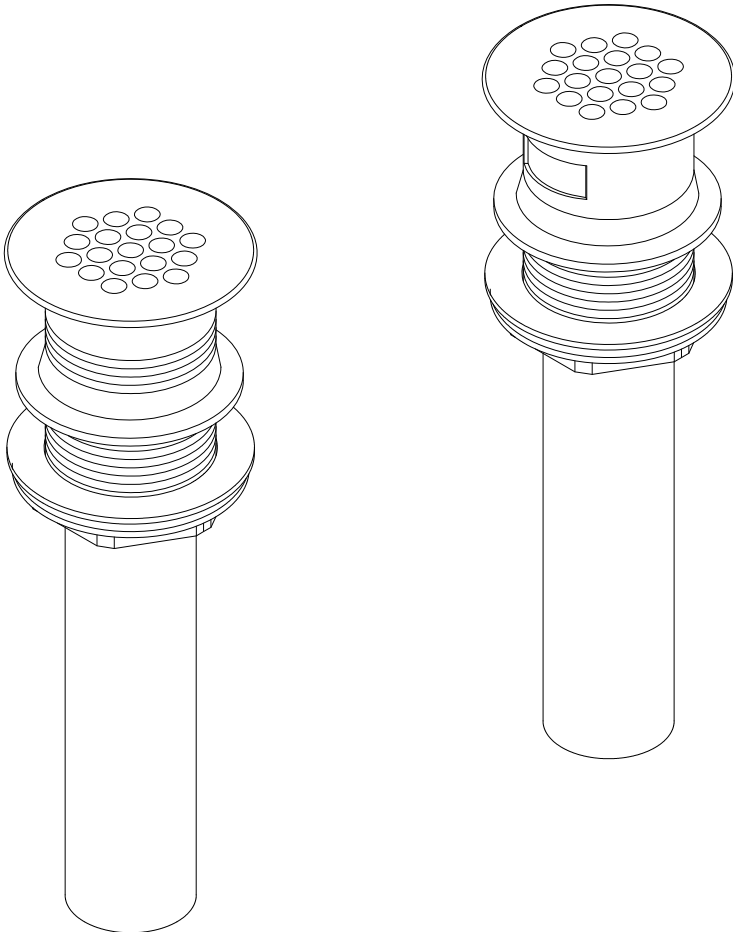


Elements
Of Design



www.eodfaucet.com

TOLL-FREE CUSTOMER SERVICE: 877-FAUCET-1(328-2381)

TECHNICAL SUPPORT E-mail: info@eodfaucet.com

12775 Reservoir St Chino, CA 91710

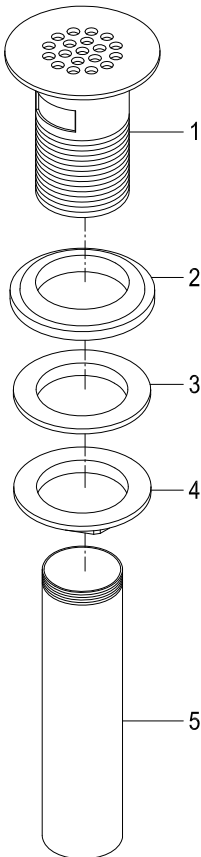
INSTALLATION INSTRUCTIONS

For Use With EOD's Sink Drain with or without Overflow

Need Tools:



INSTALLATION:



1. Remove the tailpiece (5), lock nut (4), washer (3) and rubber gasket (2) from the drain body (1).
2. Apply a small bead of silicone caulking (Do not use plumbers putty) around the drain opening of sink or the underside of the flange of drain body (1).
3. Insert drain body (1) downwardly into the drain opening of sink. The threaded end of drain body (1) should come out beneath the sink.
4. Install the rubber gasket (2), washer (3) and lock nut (4) one by one onto the drain body (1) from the underside of sink. Turn the rubber gasket (2) and move it up against the drain opening, make sure the taper surface of rubber gasket (2) is upward.
5. Turn the lock nut (4) and tighten it up by a wrench until the rubber gasket (2) can completely and tightly seal the drain opening beneath the sink.
6. Apply Teflon tape on the threaded end of tailpiece (5). Then thread- connect it with the outlet of drain body (1).
7. Turn on faucet in full open to fill water in the sink, or pour in with a large amount of water at a time. Examine and make sure no water leakage around the rubber gasket (2) or connection with tailpiece (5) beneath the sink.
8. If leakage found, adjust the rubber gasket (2) and re-tighten up the lock nut (4) or re-connect the tailpiece (5) until no more leakage.